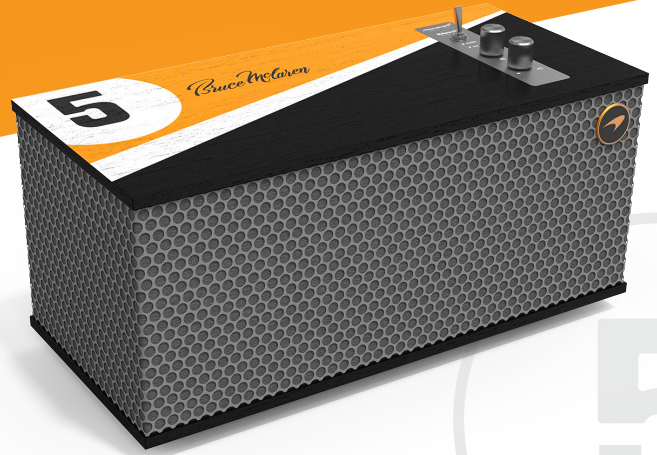


THE ONE II

McLAREN EDITION



OFFICIAL PARTNER



McLAREN RACING INSPIRED FINISHES

The One McLaren Edition embodies luxurious Formula 1 style. The wood veneer showcases McLaren's signature papaya color, making it easily identifiable to any racing fan. Bruce McLaren won his first race in the #5 car, which is featured prominently on The One tabletop stereo to celebrate his legendary achievements. The metal grille provides a premium, yet industrial-style look, perfect for any home, man cave, garage or office.

PROFESSIONALLY TUNED STEREO SOUND

The diminutively sized The One McLaren Edition is a 2.1 stereo system biamplified for audiophile resolution with two 2 1/4" full range drivers and a 4.5" woofer, professionally tuned by Klipsch acousticians to deliver crystal clear acoustic performance with great bass. You'll be surprised at the sound quality from this small package.

BLUETOOTH® WIRELESS TECHNOLOGY

The One McLaren Edition tabletop stereo system features Bluetooth® 5.0 Wireless technology so you can enjoy streaming internet services, internet radio, or content stored on your phone or tablet. Pairing your Bluetooth® device with The One McLaren Edition is extremely easy - simply press and hold the source button on The One and selection The One McLaren Edition on your smartphone.

3.5MM ANALOG AUDIO INPUT

The One McLaren Edition features a 3.5mm analog input, so you can connect any audio source via 3.5mm to 3.5mm audio cable or an RCA to 3.5mm audio cable. Connect your CD player, computer (via the headphone output jak), Blu-Ray player, or any audio source to rock the house.

FLEXIBLE PLACEMENT OPTIONS

The One McLaren Edition is small enough that it can be placed anywhere - on a tabletop, small credenza, office desk, etc.

SPECIFICATIONS

MAX ACOUSTIC OUTPUT	103dB
HIGH FREQUENCY DRIVERS	2 1/4" (57.15mm) full range drivers
SUBWOOFER	4.5" (114.3mm) woofer
ENCLOSURE TYPE	Sealed
POWER	60 Watts
FREQUENCY RESPONSE	56Hz ~ 20kHz @ -3dB
INPUTS	Bluetooth® 3.5mm miniplug (analog)
OUTPUTS	None
DIMENSIONS (WXHXD)	12.67" (32.2cm) x 6.125" (15.56cm) x 5.25" (13.3cm)
FINISH OPTIONS	Walnut, Matte Black
VOLTAGE	110/240 VAC
WEIGHT	8.5 lbs (3.86kg)