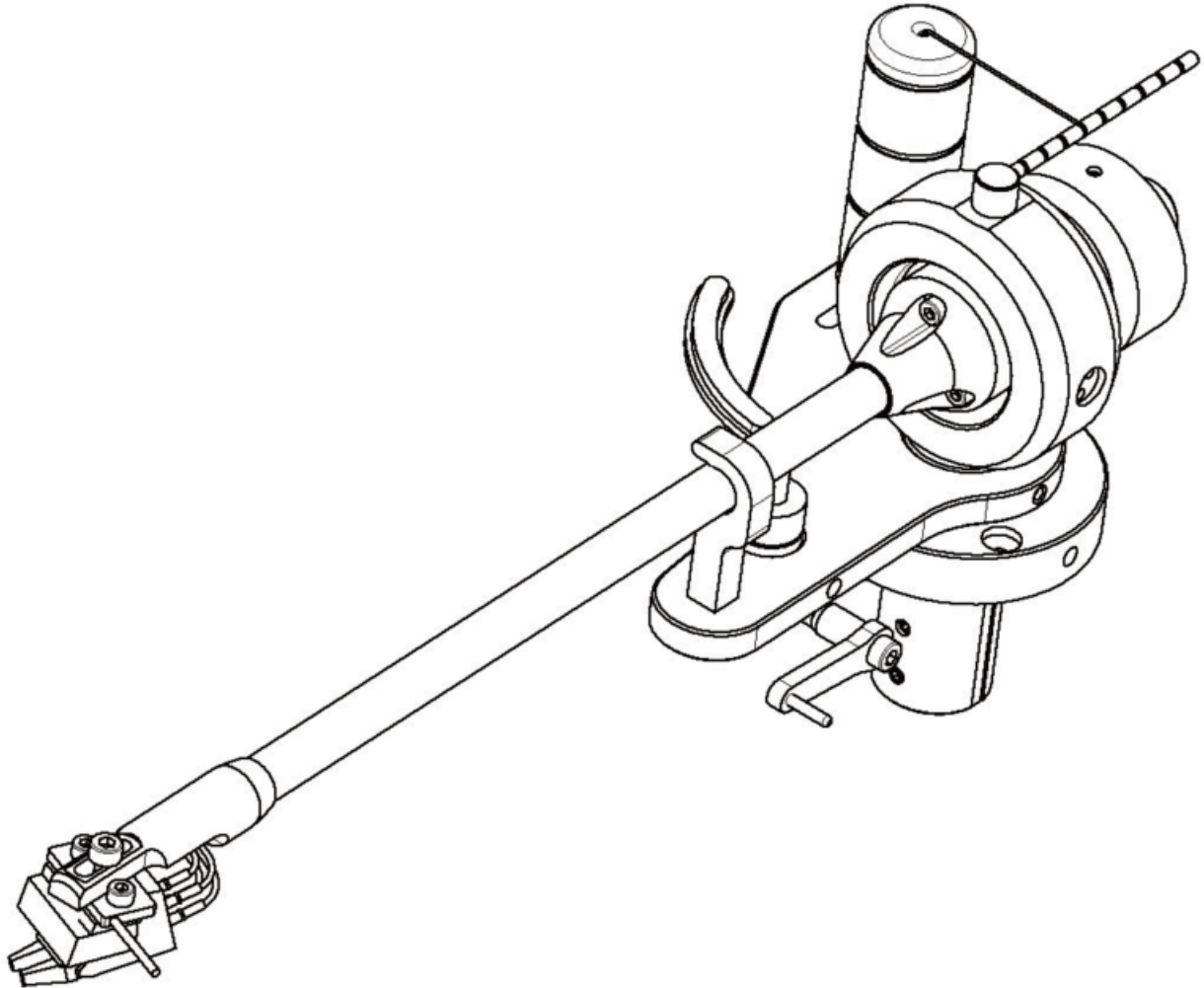


Instruction Manual

**TA-1000**  
Pick-Up Arm



**ACOUSTIC**  
**SIGNATURE**

Teutonic engineering.

The TA-1000 Series embraces three models

TA-1000 9 Inch

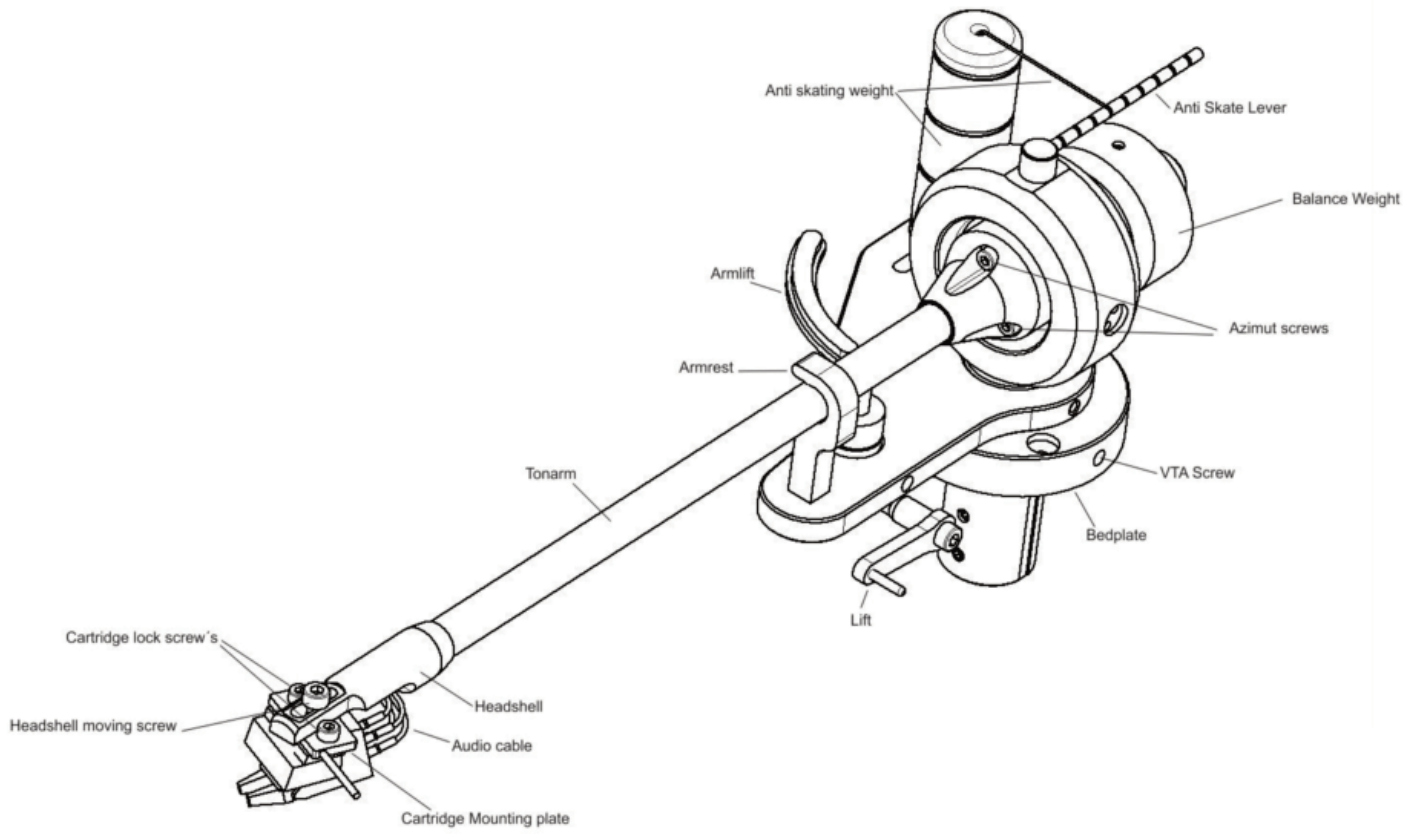
TA-1000 10 Inch

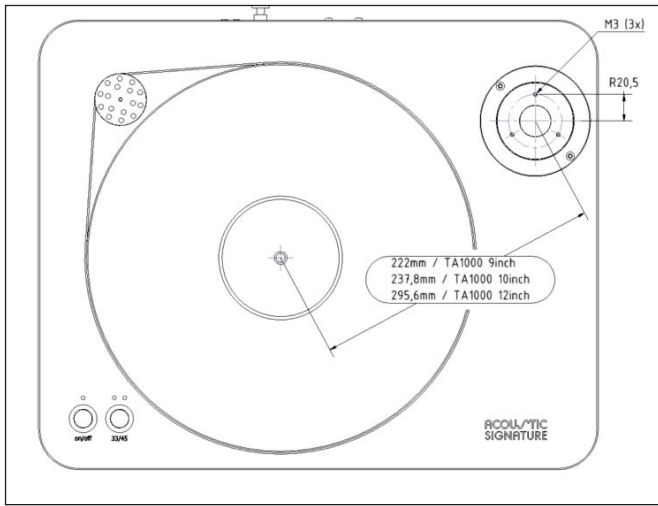
TA-1000 12 Inch

offering pivot to Stylus dimensions covering virtually all turntable requirements.

These arms offer at reasonable cost outstanding built quality with all the most important features including azimuth adjustment, high precision ball bearings.

## Parts identification



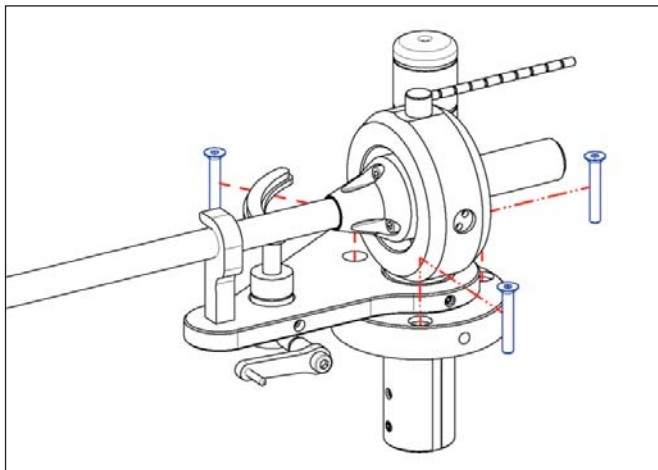


### 1. Preparing the arm mounting board

To mount the TA 1000 tonearm your turntable needs to have a 23mm thru hole combined with 3 M3 thread's around it at the Radius of 20.5mm (see drawing).

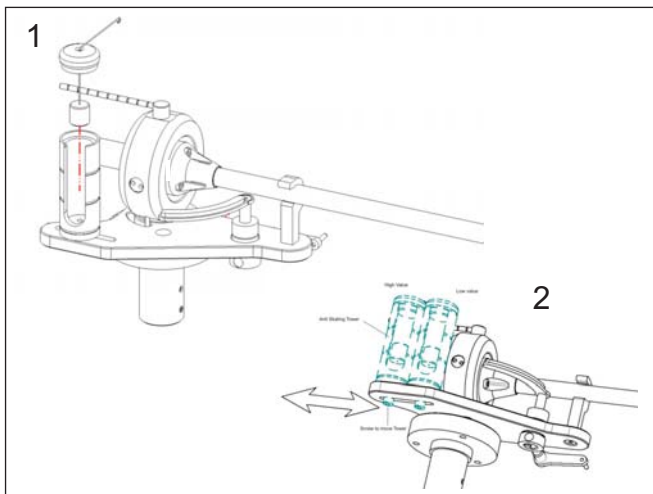
Ensure that the thread's are positioned as showed in the drawing. The distance of the center hole to the middle of the platter must be:

222mm for the 9 inch version  
237,80mm for the 10 inch version  
295,60mm for the 12 inch version



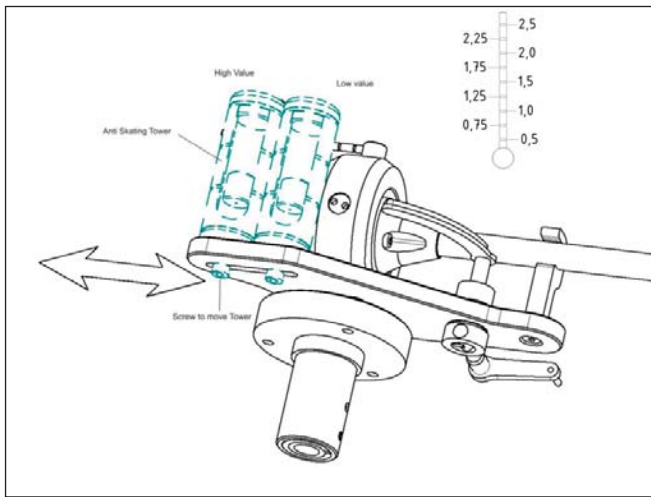
### 2. Fitting the arm

Take the provided 3 screws (marked blue) and put them into the marked 3 holes. Use the provided allen key to tighten the screw's. To get easier access to the holes it might be helpful to turn the armtube so the holes are free.



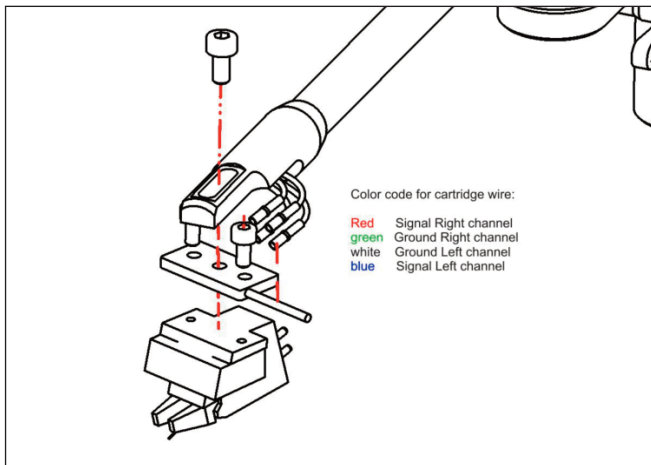
### 3. Antiskating

Take out the Antiskating weight with the string (1) and put the Alu piece into the tube and pass the string with his loop over the antiskate lever.



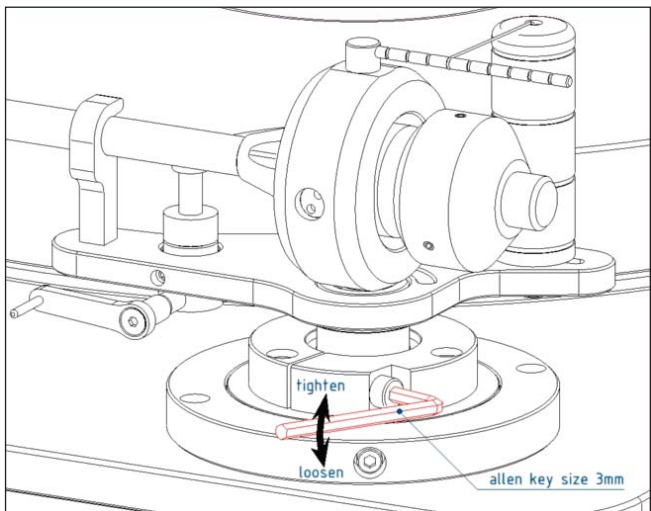
### 3.1 Antiskating

To ensure that depending on your needed Anti Skating force the string is moving straight the Antiskating Tower can be moved forward and backward. For low antiskating value up to 1gr. we suggest to have the Tower in a more front position. Higher values require a position in the middle or on the back end of the arm. By opening the screw on the bottom the tower can be moved. Please check with your cartridge manual for the right value.



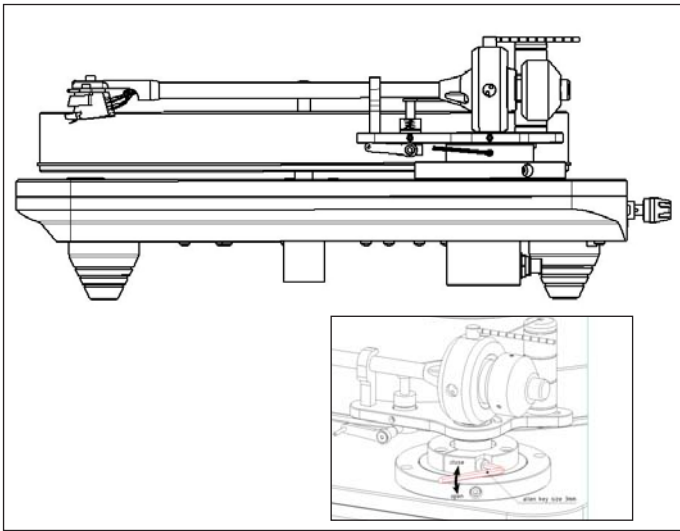
### 4. Mounting the cartridge

Please take a look at the assembly drawing to mount your cartridge to the tonearm. We use a cartridge mounting plate to mount your cartridge on. Use the provided screws of the cartridge or the 2 M2.5 screws we supply with the tonearm. Mount your cartridge to the plate and then connect the audio cable pin's to your cartridge. Take care for the correct color. Then use the provided M3 Screw to attach the assembly to the head-shell.



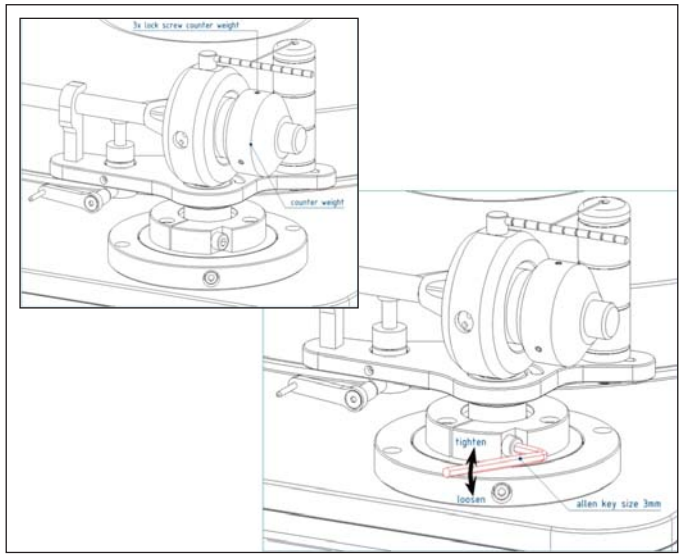
### 5. Prepare adjusting the cartridge

Before we start aligning the cartridge we we need to pre adjust the Tracking force and the height of the tonearm. Tracking force will be adjusted by moving the counter weight forward (more weight) or backward (for less weight). Search the manual of your cartridge for the right value and adjust it by using a weight scale (not provided).



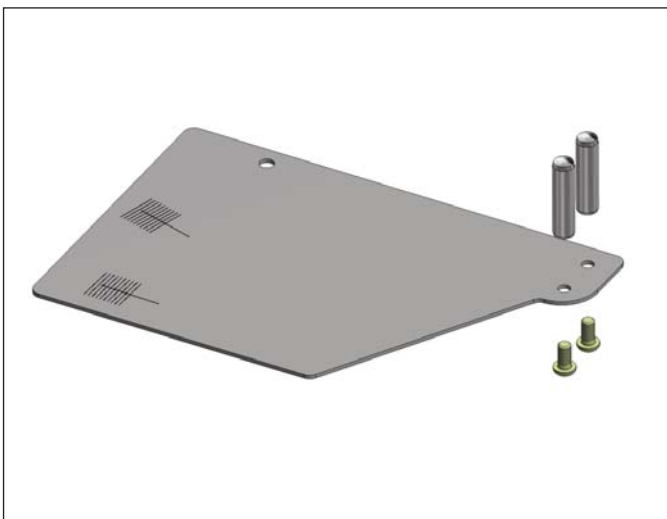
### 5.1 Prepare adjusting the cartridge

Adjust the arm height with cartridge fitted, is either level or slightly low at the front end. You can do this by opening the red marked screw with the provided allen key. Open it carefully adjust the needed height and tighten the screw softly. Check if height is ok - if not redo the adjustment. Be aware the when opening the screw the arm might fall down!



### 5.2 Prepare adjusting the cartridge

Open it carefully adjust the needed height and tighten the screw softly. Check if height is ok - if not redo the adjustment. Be aware the when opening the screw the arm might fall down!



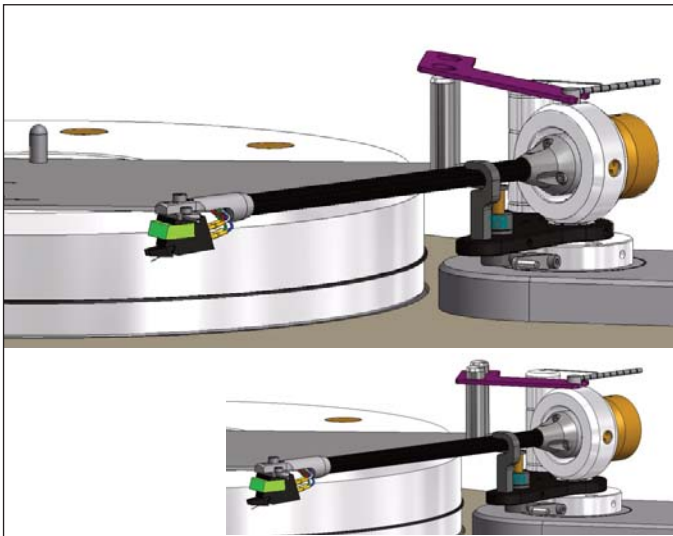
### 6. Adjusting the cartridge

This is done by using the provided adjustment template. Take the template and assemble it as shown and place it on the platter.



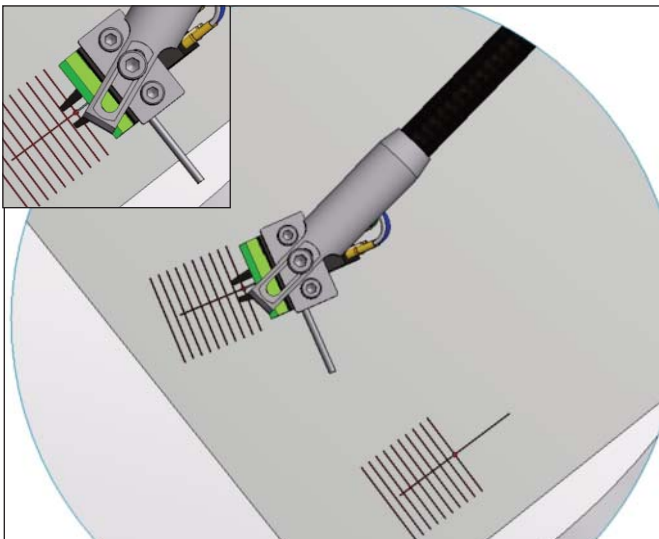
### 6.1 Adjusting the cartridge

Use the plastic (showed pink in the left picture ) piece and place it below the anti skating stub and above the 2 metall pillar's. This ensures your template is in the correct angle for adjusting the cartridge.



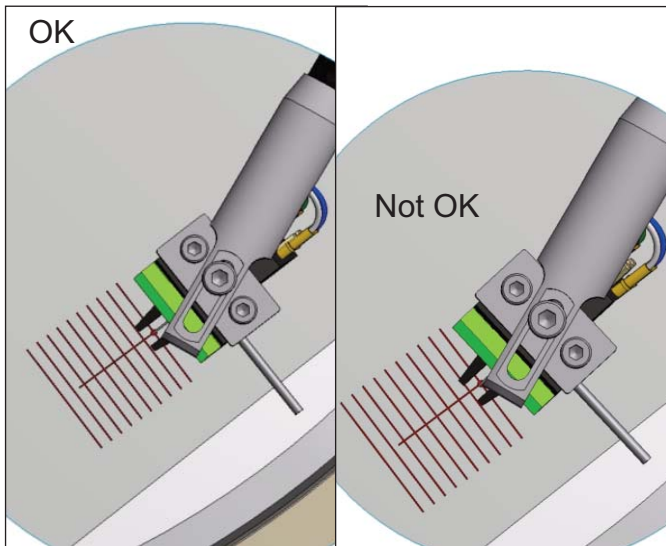
### 6.3 Adjusting the cartridge

Make sure to use it in the exact orientation as shown in the pic. This ensures your template is in the correct angle for adjusting the cartridge.



### 6.4 Adjusting the cartridge

Lift down the cartridge and place the diamond tip of the cartridge on the reference point of the alignment gauge and make sure that the edges of the cartridge are absolutely parallel to the marking lines printed on the cartridge alignment gauge. For that adjustment it is necessary to take a look directly from the top on the tonearm and the alignment gauge. We suggest to align only to the inner point of the alignment gauge!

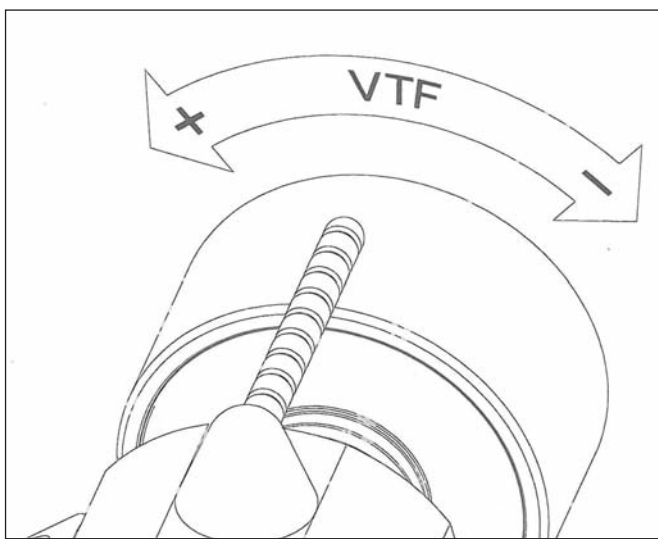


## 6.5 Adjusting the cartridge

If you have to change the position of the diamond tip you can unscrew the screw on the top of the tonearm's headshell and move the cartridge into the corresponding position.

Please make also sure that the leading edge of the cartridge is parallel to the marker lines of the cartridge alignment gauge and the needle is exactly in the reference point. If not correct it by moving forward and backward and changing the angle.

Fix the right position through looking the headshell screw on the top.



## 7. Longitudinal balance

Position the arm so that it is clear of the armrest and the cartridge is clear of the turntable. Move the lift into the low position. Balance the arm by rotating the weight to move it backwards or forward as required to make the arm float around his zero point.

The tracking force weight has 3 screws around his circle to fix the position. Make sure to tighten the screws only very soft.

## 8. Vertikal tracking force (cartridge)

The screws can be used as scale to adjust the weight.

**Every 360 degree turn of the weight adds 0.25gramm** to the cartridge. So if you need 1.5 gr. for example find the zero floating position of the arm and then do 6 full roundturns to get the 1.5gr. tracking force.

TA-1000 technical DATA				
Länge	9 inch	10 inch	12 inch	Length
Justierbare Tonabnehmer	4 g - 16.0 g	4 g - 16.0 g	4 g - 16.0 g	Cartridge balance range
Nullpunkte	61.0mm	61.0mm	61.0mm	Zero Point inner DIA
	121.0mm	121.0mm	121.0mm	Zero Point outer DIA
Signalkabel	1.5m direct wire/or 5 pin	1.5m direct wire/or 5 pin	1.5m direct wire/or 5 pin	Singal Cable
Überhang	15	16,2	12,56	Overhang
Gesamtlänge	252	270,2	330,66	Total length
Effektive Tonarmlänge	237	254	318,1	Effective length
Abstand (Mitte Tonarmlager zu Mitte Tellerlager)	222 mm	237,8 mm	295,6 mm	Distance (Distance from pivot to stylus)
Kröpfungswinkel	22.00 °	21,60 °	17,30 °	Tilt Angle
Eff. Masse	9,3 gr	9,7 gr	12,3 gr	Effective mass
Gewicht	575 gr	585	600	Total weight
Tonarmaufnahmebohrung	Rega Style / or SME	Rega Style / or SME	Rega Style / or SME	Tonarm mounting

**ACOUSTIC  
SIGNATURE**  
Teutonic engineering.

Acoustic-Signature  
Made by AS-Distribution GmbH  
Hillenbrand Straße 10  
D-73079 Süssen  
Tel: +49 7162 9474450  
Fax: +49 7162 9474459  
www.acoustic-signature.com  
E-Mail: info@as-distribution.de