

PRECISION SA-CD TRANSPORT DP-1000



Accuphase Laboratory, Inc.

In 2000, Accuphase launched the world's first separate SACD transport DP-100, after that, Accuphase has been creating the attractive sound with the cutting-edge technologies well known as the DP-800 which has own SACD drive mechanism in 2006, the DP-900 in 2011, and the DP-950 in 2016.

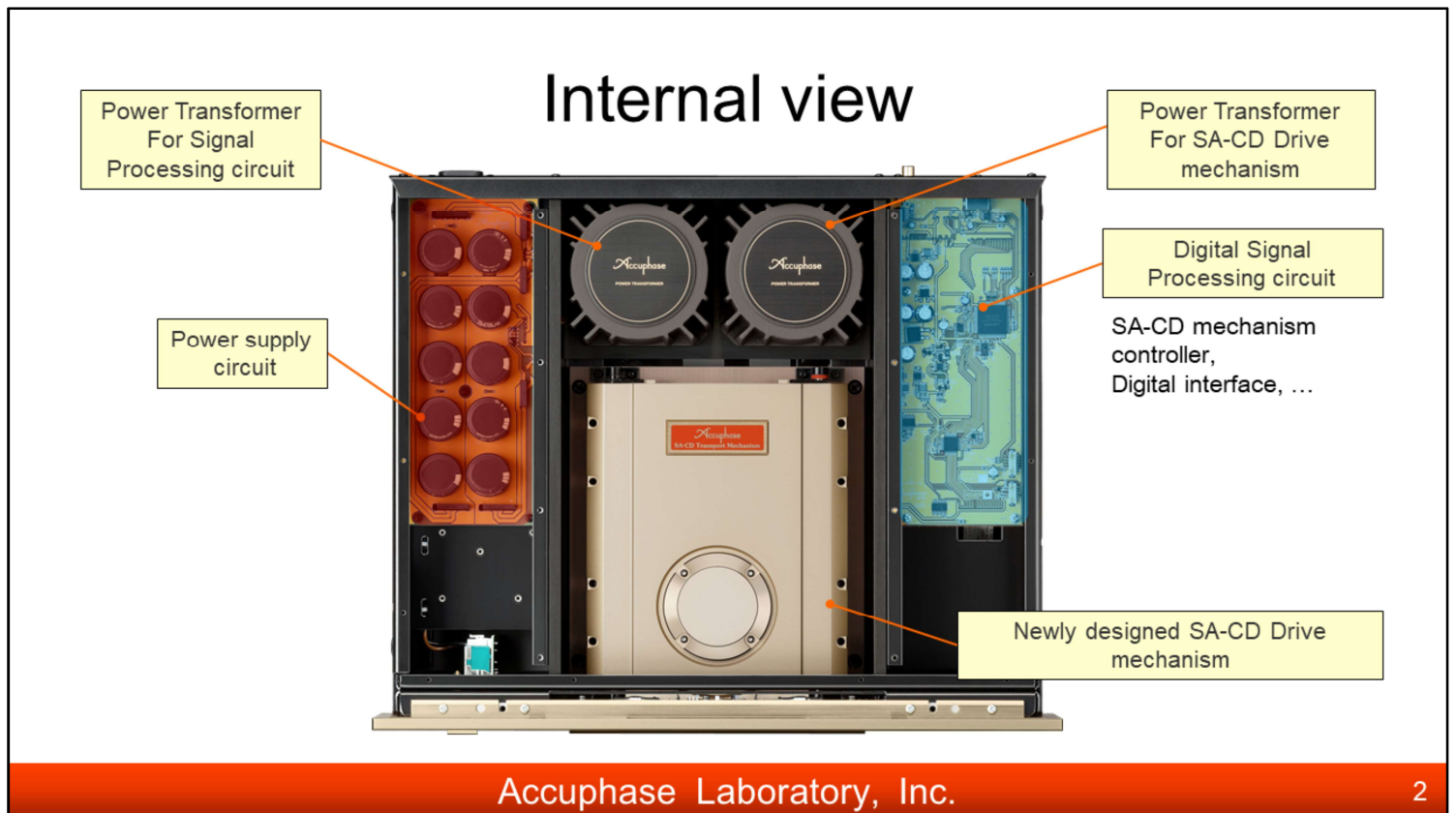
The DP-1000 is the latest, 5th generation SACD transport that marks Accuphase's 50th anniversary.

To quietly and accurately read data, the SACD drive is newly developed with the high-rigidity and the thorough low center of gravity that prevent the external vibration.

The high-quality viscoelastic damper is also newly developed and it helps to reduce the magnification of natural resonances in the objective lens and actuator thus improving reading precision.

Programmable playlists or amplifier volume control with remote commander functions are making the DP-1000 more user-friendly.

The DP-1000 is the ideal transport for all audiophiles that extracts very essence of music and perfectly playbacks the immersive scenes recorded in the music sources.



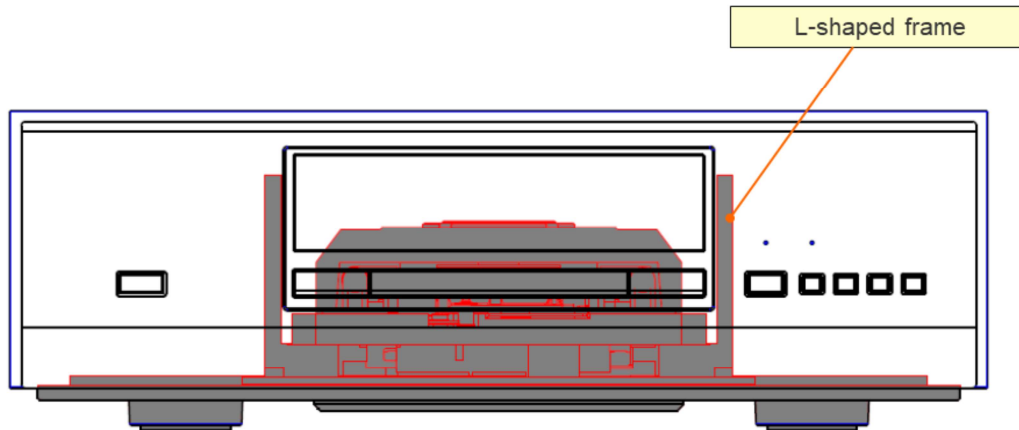
DP-1000 has the ideal internal layout to achieve high-precision data reading.

The newly-developed SACD/CD drive and the large, high-efficiency toroidal transformer with independent mechanical system and signal processing are located in the center and realizing a perfect weight balance.

The digital signal processor and clock generator which precisely transmit data are placed on the right, and the large power supply circuit to perfectly drive those units are on the left.

Chassis structure

- High rigidity chassis structure with minimum necessary components



Accuphase Laboratory, Inc.

3

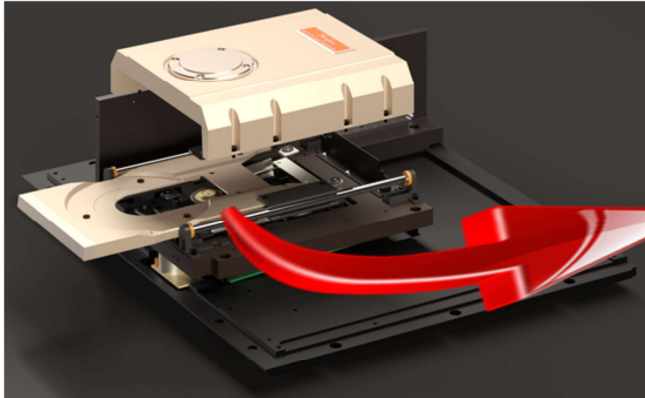
With respect to the main unit's center of gravity, the higher position of the optical pick up as the signal reader lowers the accuracy of data reading due to its wobbling by external vibrations.

The DP-1000 S/ACD/CD drive has the low center of gravity construction that reduces external vibrations from reaching the traverse mechanism.

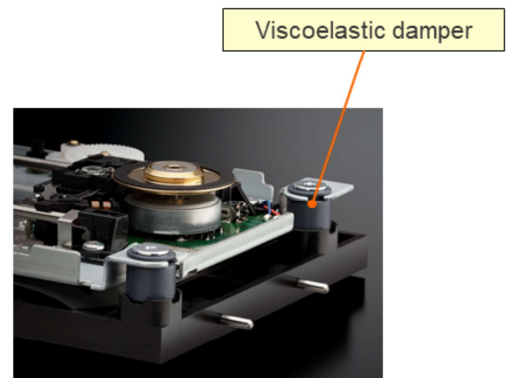
Also, the DP-1000 applies the single L-shaped frame while former multi-piece one. It significantly contributes the high-rigidity to the main unit, and it prevents external vibrations.

Newly designed SA-CD drive mechanism

- Offering quiet listening environment
- High torque and less vibration by the outer rotor brushless DC motor



New SA-CD/CD Drive Mechanism



SA-CD Pickup Unit

Accuphase Laboratory, Inc.

4

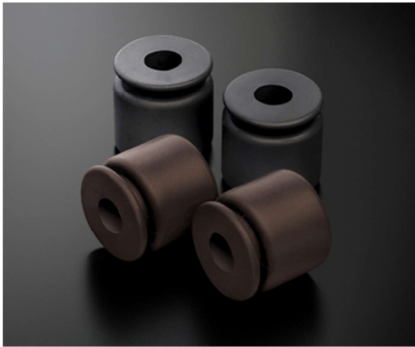
Creating a quiet listening environment is a vital component in enjoying music, so the DP-1000 enforces the thorough anti-vibration measures.

Newly designed SACD/CD drive is directly mounted on a completely flat and high-rigidity chassis, with its low center of gravity, the operational noises are kept to a minimum.

The SACD pick up unit is interconnected using newly-developed viscoelastic dampers separated from external vibrations, and an outer rotor brushless DC motor with an accurate rotation axis guarantees a powerful and stable operation.

Newly designed SA-CD drive mechanism

- Optimizing the vibration-isolation effect with new viscoelastic dampers
- Large Bridge Base as the shielding wall for the airflow



Viscoelastic damper



Bridge Base

Accuphase Laboratory, Inc.

5

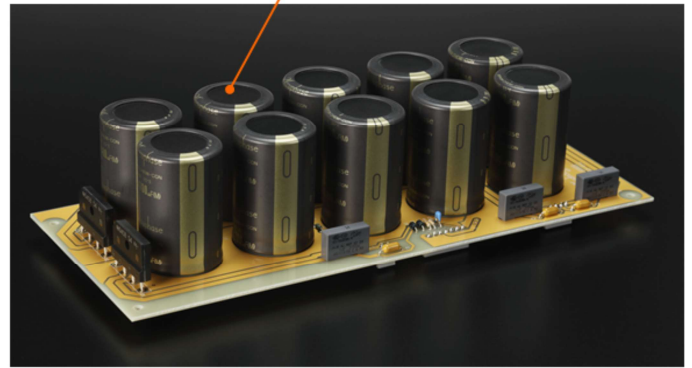
Newly developed viscoelastic dampers of two different hardnesses reduce the magnification of natural resonances in the objective lens and actuator.

The large bridge base that elegantly finished with a gold anodized works not only as a vibration absorber, but as a rectifier for the turbulence occurred by disc rotation.

Strong Power Supply



Power Transformers



Power Supply Unit

Accuphase Laboratory, Inc.

6

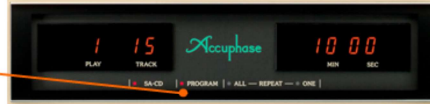
To support the high-speed disc rotation, the power supply circuit to drive the motor should be high-powered.

The large, high-efficiency toroidal transformers with independent SA-CD Drive Mechanism and signal processing are fully custom-made, they are well-crafted only for the DP-1000 ideal operation.

The large filtering capacitor is adopted the best quality one with original sound tuning.

Furthermore

- Programmable play mode available



High quality Insulators

Accuphase Laboratory, Inc.

7

The DP-1000 features the programmable playlists function with the remote commander RC-140 so that you can enjoy your music in the order you like.

RC-140 also allows you to operate the volume control and input selection on the Accuphase amplifiers.

Of course, the legs are the advanced high-carbon cast iron insulators, the DP-1000 has no compromise in every details.

HS-LINK Version2 Available

- HS-LINK is upgraded to Ver.2
 - Transmits master clock separately
 - Supports up to 384kHz / 32bit - PCM, 5.8224MHz - DSD
 - Use the same HS-LINK cable as Ver.1
- HS-LINK Ver.1 output is still available.
 - Backward compatibility.



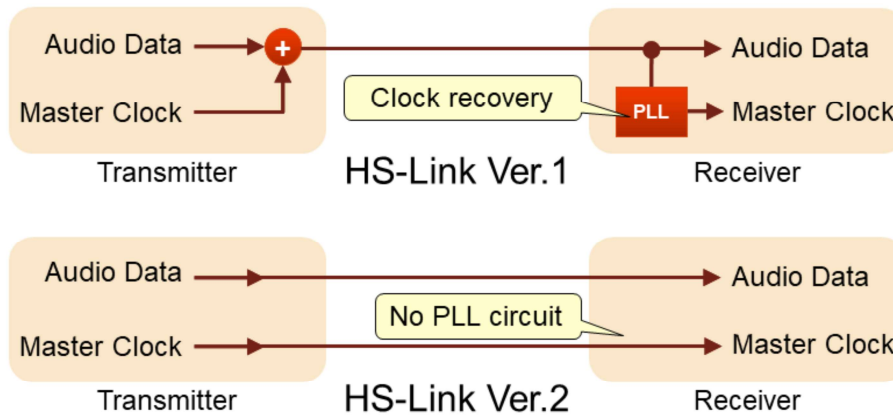
HS-LINK Cable

HS-LINK Version 2 extends the HS-LINK standard.

For backward compatibility, DP-1000 is still available HS-LINK Ver.1 output.

HS-Link Version2 Advantages

- Transmitting the master clock separately
 - No Jitters occurred from Clock Recovery circuit



Accuphase Laboratory, Inc.

9

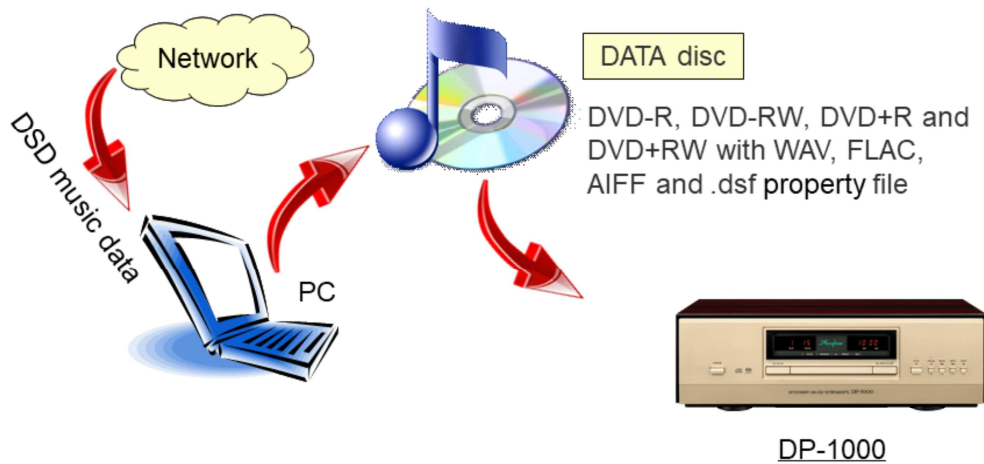
The biggest feature of HS-LINK Ver.2 is sending the music signal and the master clock separately to D/A converter in a receiver.

HS-LINK Ver.1 sends the music signal merging the master clock together, PLL circuit for master clock recovery is needed at receiver side.

Since master clock is transmitted as it is, in HS-LINK Ver.2, not only master clock recovery is unnecessary at receiver side but it comes to be free from the jitter at PLL circuit.

“DATA Disc” Available

- New SA-CD drive can play DATA Disc which is made with your PC



Accuphase Laboratory, Inc.

10

DATA Disc playback is available.

You can record music files on blank DVD by using your PC.

DP-1000 can play 192kHz 24bit data of WAV, FLAC, AIFF format, and 5.6MHz 1bit DSD data also.

You can enjoy all kinds of digital data with DP-1000.