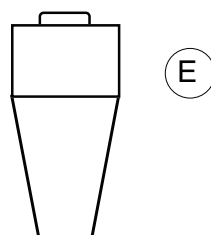
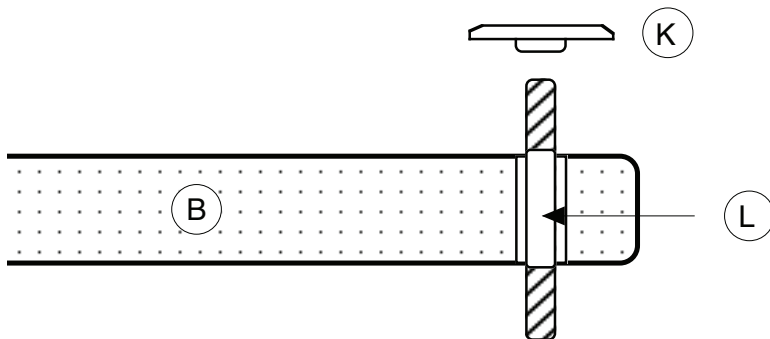
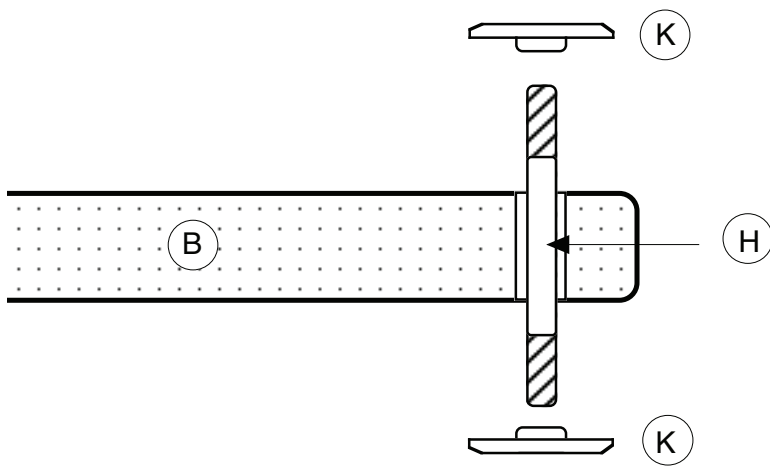
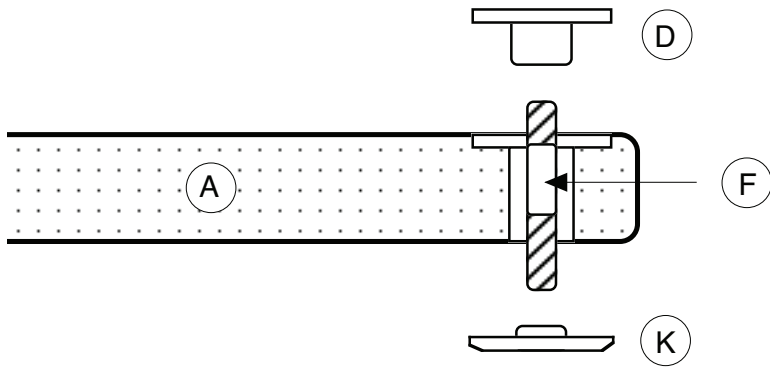


# solidsteel

**S 3**

**S 4**

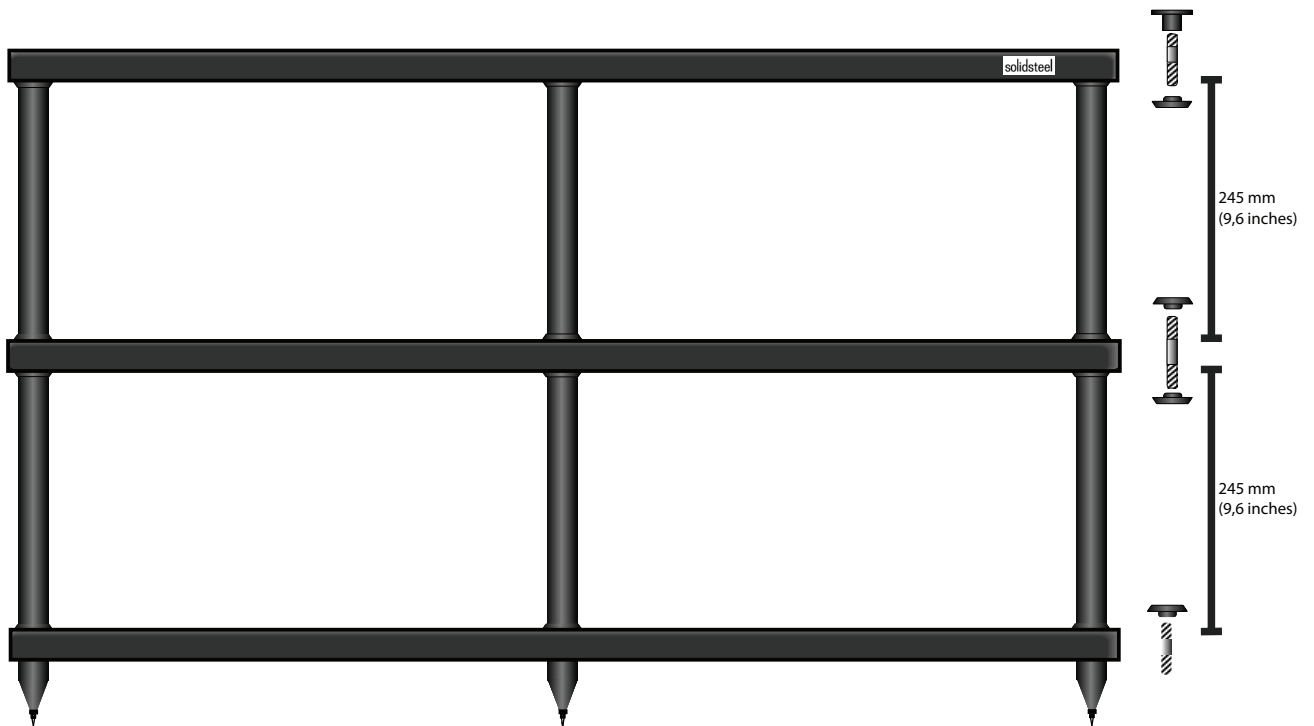
**S 5**



# solidsteel

## S4-3 Audio rack

Width of 1114 mm (43,85 inches), Depth of 430 mm (16,9 inches) and 670 mm of Height (26,37 inches)  
Inner shelves dimensions of Width 500 mm (19,68 inches) and Depth of 430 mm (16,9 inches) for all.



# S4 Series

The S4 Series draws inspiration from decades of production results achieved by our historical Series. Thanks to the priority given on the quality research for the used materials, all the main characteristics of the previous technical products merge with the technical properties developed over the years from the Hyperspike range and give life to a new line of audio-video supports which is characterized by the excellence and simplicity of its components.



S4-4

The refined and basilar style of the discontinued Series is unmistakably present in the new S4 Series, which is always the result of passion for listening, for the audiophile experience and, above all, for music.

The need to offer a line of supports further extended in width and with the same dimensional characteristics between the levels of the S3's shelves, has led to the creation of a superlative new line of products ideal for listening music and enjoying video components.

An alternative as well to the more prestigious HW Hyperspike Series. On the wake then of the technical properties typical of the S3 Series, the S4 Series presents itself as a congenial solution both in terms of functional efficiency and of space management, without losing any aesthetic care.

## solidsteel



S4-3



S4-2

## Audio Tables

Model	Description	Outer Dimensions mm   inch	Inner Shelves Dim. mm   inch	Colour
<b>S3-2</b>	Audio table 2 shelves	<b>W584 H465 D430</b> 23,0x18,3x16,9	<b>W500 H325 D430</b> 19,7x12,8x16,9	Black   White
<b>S3-3</b>	Audio table 3 shelves	<b>W584 H655 D430</b> 23,0x25,80x16,90	<b>W500 H245/245 D430</b> 19,7x9,6/9,6x16,9	Black   White
<b>S3-4</b>	Audio table 4 shelves	<b>W584 H885 D430</b> 23,0x34,8x16,9	<b>W500 H225/225/245 D430</b> 19,7x8,9/8,9/9,6x16,9	Black   White
<b>S3-5</b>	Audio table 5 shelves	<b>W584 H1035 D430</b> 23,0x40,7x16,9	<b>W500 H205/205/205/205 D430</b> 19,7x8,0/8,0/8,0x16,9	Black   White
<b>S4-2</b>	Audio/Video rack 2 shelves	<b>W1114 H465 D430</b> 43,8x18,3x16,9	<b>W500 H325 D430</b> 19,7x12,8x16,9	Black
<b>S4-3</b>	Audio/Video rack 3 shelves	<b>W1114 H655 D430</b> 43,8x25,8x16,9	<b>W500 H245/245 D430</b> 19,7x9,6/9,6x16,9	Black
<b>S4-4</b>	Audio/Video rack 4 shelves	<b>W1114 H885 D430</b> 43,8x34,8x16,9	<b>W500 H225/225/245 D430</b> 19,7x8,9/8,9/9,6x16,9	Black
<b>S5-2</b>	Audio table 2 shelves	<b>W584 H500 D430</b> 23,0x19,7x16,9	<b>W500 H305 D430</b> 19,7x12,0x16,9	Black   White
<b>S5-3</b>	Audio table 3 shelves	<b>W584 H755 D430</b> 23,0x29,7x16,9	<b>W500 H205/305 D430</b> 19,7x8,0/12,0x16,9	Black   White
<b>S5-4</b>	Audio table 4 shelves	<b>W584 H1010 D430</b> 23,0x39,7x16,9	<b>W500 H205/205/305 D430</b> 19,7x8,0/8,0/12,0x16,9	Black   White
<b>S5-5</b>	Audio table 5 shelves	<b>W584 H1085 D430</b> 23,0x42,7x16,9	<b>W500 H185/185/185/185 D430</b> 19,7x7,3/7,3/7,3x16,9	Black   White

## Audio Table for Power-Amps

Model	Description	Outer Dimensions mm   inch	Inner Shelves Dim. mm   inch	Colour
<b>S3-A</b>	Audio Base for Power-Amps	<b>W430 H120 D584</b> 16,9x4,7x23,0	<b>W430 D584</b> 16,9x23,0	Black   White
<b>S3-B</b>	Audio Base for Power-Amps	<b>W404 H120 D480</b> 15,9x4,7x18,9	<b>W404 D480</b> 15,9x18,9	Black   White

## Wall Shelf

Model	Description	Dimensions	Inner Shelves Dim. mm   inch	Colour
<b>WS-5</b>	Wall shelf for turntable	<b>W550 H160/50 D470</b> 21,7x6,3/2,0x18,5	<b>W550 H160/50 D470</b> 19,7x16,1	Black

## Stands for Bookshelf Loudspeakers

Model	Description	Dimensions	Inner Shelves Dim. mm   inch	Colour
<b>SS-5</b>	Stands for Bookshelf Loudspeakers	<b>W330 H525 D310</b> 13,0x20,7x12,2	<b>W190 x D190</b> 7,5x7,5	Black
<b>SS-6</b>	Stands for Bookshelf Loudspeakers	<b>W330 H625 D310</b> 13,0x24,6x12,2	<b>W160 x D160</b> 6,3x6,3	Black
<b>SS-7</b>	Stands for Bookshelf Loudspeakers	<b>W330 H725 D310</b> 13,0x28,5x12,2	<b>W160 x D160</b> 6,3x6,3	Black
<b>NS-6</b>	Stands for Bookshelf Loudspeakers	<b>W230 H625 D280</b> 9,1x24,6x11,0	<b>W160 x D160</b> 6,3x6,3	Black
<b>NS-7</b>	Stands for Bookshelf Loudspeakers	<b>W230 H725 D280</b> 9,1x28,5x11,0	<b>W160 x D160</b> 6,3x6,3	Black
<b>NS-10</b>	Stands for Bookshelf Loudspeakers	<b>W230 H1020 D280</b> 9,1x40,1x11,0	<b>W160 x D160</b> 6,3x6,3	Black

Solidsteel reserves the right to amend details of the specifications without notice in line with technical developments.

[www.solidsteel.it](http://www.solidsteel.it)

**solidsteel**

Solidsteel MC Group SRLS